

# SHOJI

SHOJI PANEL WINDOW, WALL AND ROOM SOLUTIONS



# SHOJI PANEL TRACKS

## Vestal, Elegant, Affordable

### MASTERCRAFT SHOJI PANEL TRACKS

Available in a full range of woods from our excellent quality select kiln dried poplar and basswood to specialty woods like Cherry, Oak and Mahogany.

Removable valance makes maintenance a breeze. Now you can remove the valance in seconds and access the hardware for adjustment.

Interchangeable inserts offer an endless cost effective way to change your future décor needs.

Whether you are looking to add possibility to an open concept living space or want to add a touch of the orient, Mastercraft shojis offer endless options to match any décor. Mastercraft has been making quality hand made window treatments for over 22 years now and has used their skill and knowledge to improve on this timeless classic piece, by making them more durable and backing all inserts with acrylic. Mastercraft has developed an exclusive interchangeable insert option this allows you to easily service any damage as well as the ability to change your inserts to match your future changing décor.

Mastercraft manufactures the Shoji line out of our headquarters based in Toronto, Ontario. We offer fast turnarounds and back the shoji framing and select inserts with our lifetime guarantee.

## C O N T E N T S

- 1 Cover page
- 2 Introduction & table of contents
- 3 A close up look at Mastercraft Shojis
- 4 Shoji photos
- 5 standard shoji specifications
- 6 Measuring guidelines
- 7 Measuring guidelines
- 8 Basic panel configuration
- 9 Shipping policy



A close up look at Mastercraft Shojis	
Custom stained or painted to match	8 ball bearing wheels to a panel ensuring smooth movement
Matching wood removable valance	Interchangeable inserts in a wide variety of colors textures and materials

## APPLICATION

**Mastercraft Shutters**  
Shoji panel tracks solutions are designed to fit any openings. Maximum width for a single panel is 48". The shoji can be installed inside or outside the opening or mounted to the ceiling.

Each Shoji opening comes with its own wooden valance. When panels are closed, the track hardware is out of sight.

## SHOJI OPERATION

Panels glide right to left.

Bifold and fixed options available.

Maximum 4 panels per track.



## Size Standards

### Width

Minimum	6"
Maximum single panel width	48"

### Height

Minimum	6"
Maximum	180"



## Mounting Requirements

### Inside Mount

Minimum mounting depth per track	1 1/2"
----------------------------------	--------

### Outside Mount

Minimum flat vertical surface per track	2"
---	----

### Ceiling Mount

surface width per track	1 1/2"
-------------------------	--------

## Factory Deductions

Inside mount panel height	3/8" off ordered height
---------------------------	-------------------------

Outside panel height	0 off ordered height
----------------------	----------------------

Ceiling mounts	3/8" off ordered height
----------------	-------------------------

## ORDERING NOTES

Follow measuring guidelines in the Measuring section.

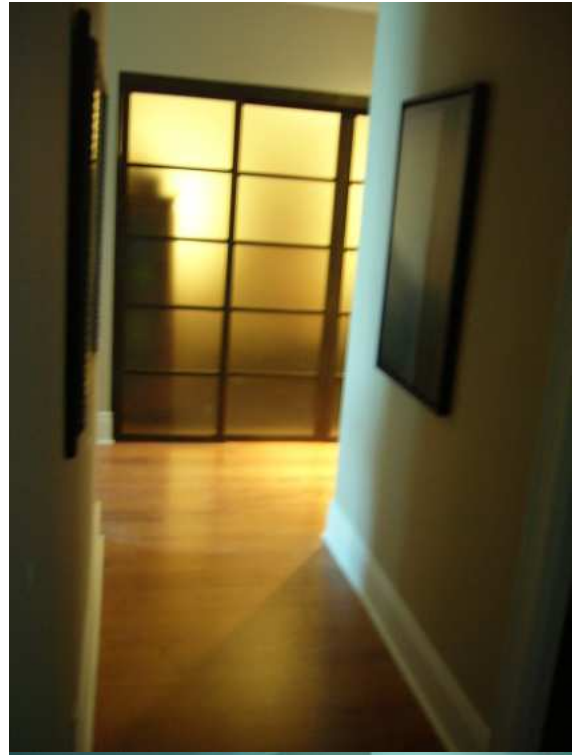
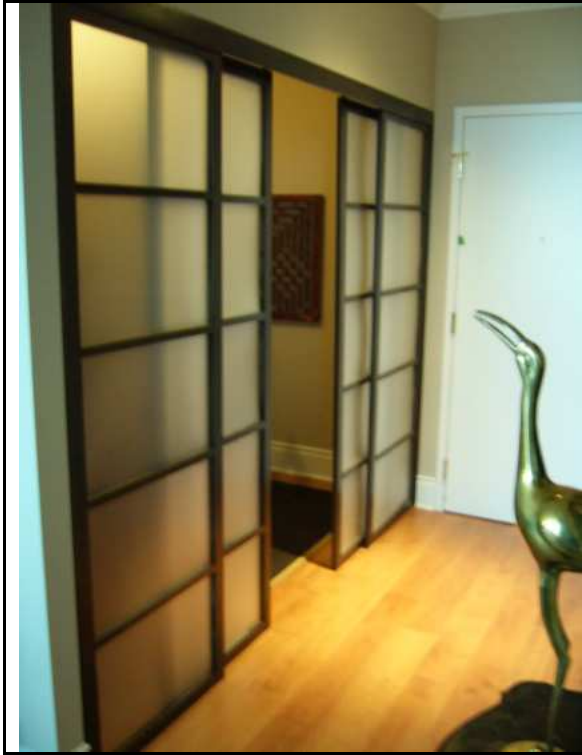
Specify number of panels and tracks.

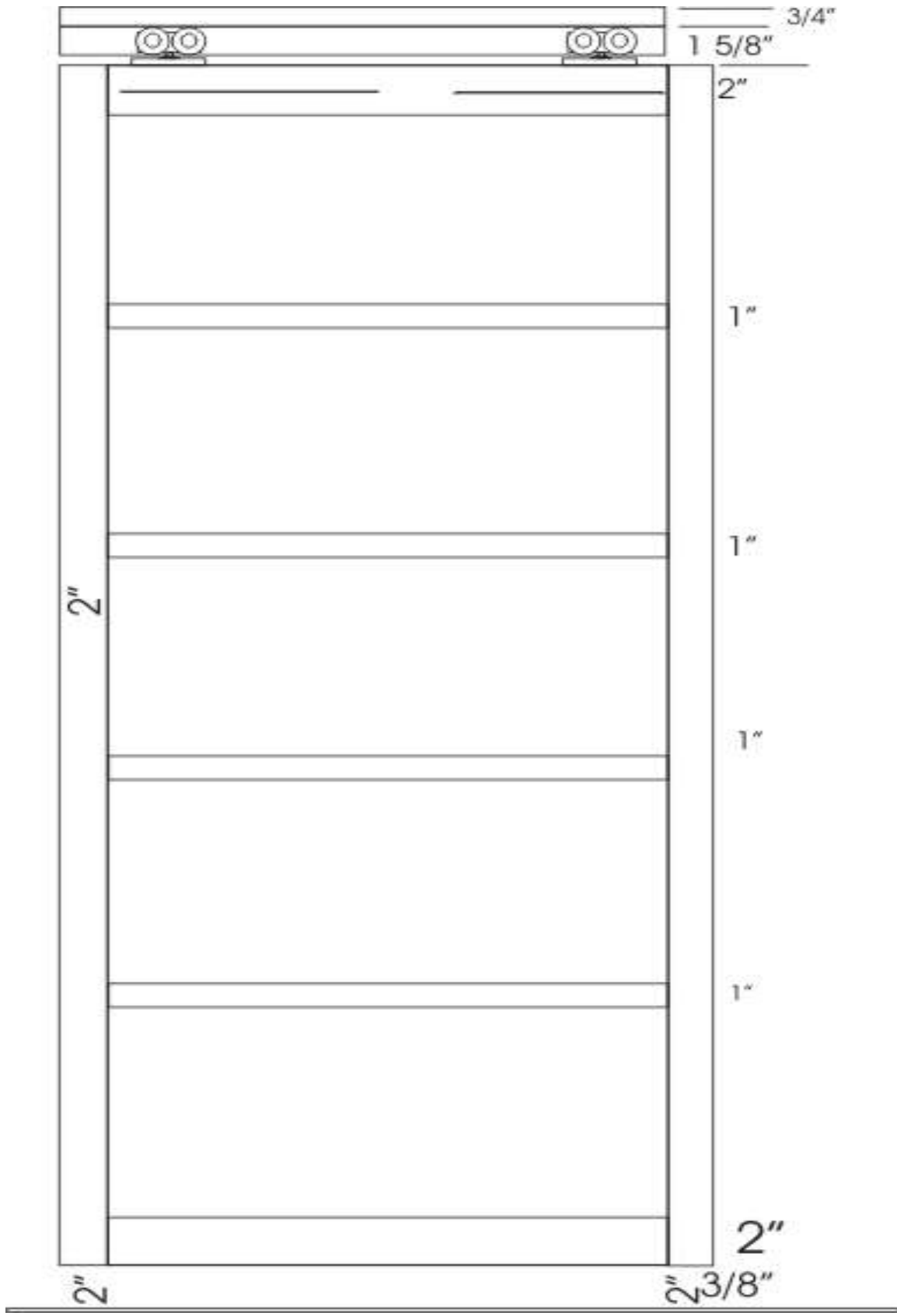
Inside mounts: Standard installation hardware provided.

Ceiling mounts: Hardware provided

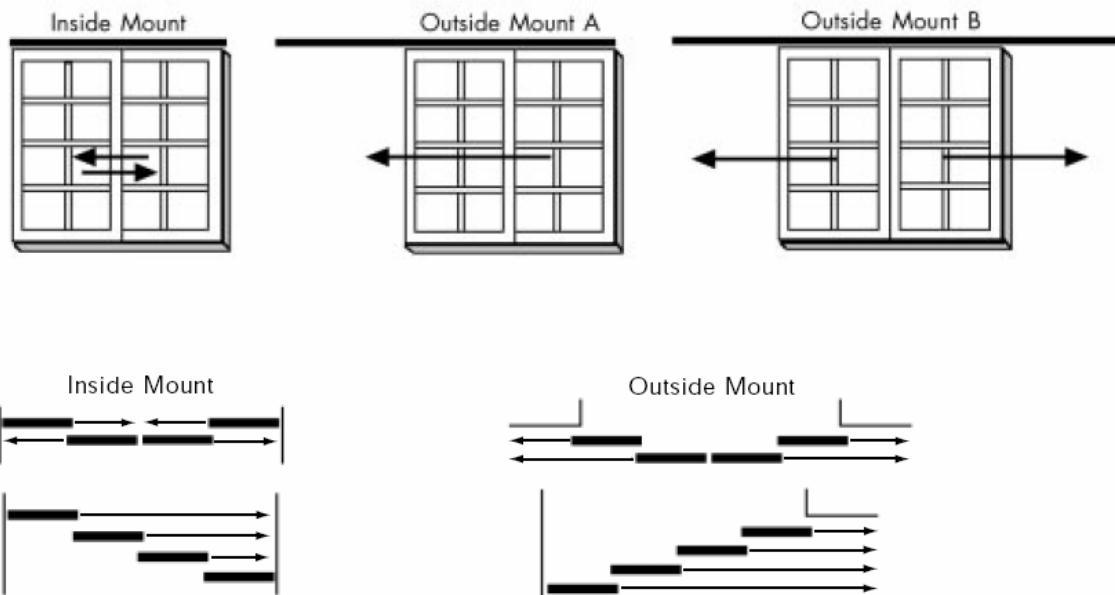
Outside mounts: Specify if ceiling brackets are required

## Mastercraft Shoji





# Measuring Guidelines



Accurate Measurements Are essential Measurements are used first to cost the Shoji, and then to custom manufacture to the precise size. The size supplied on the order form must be accurate for the shoji to properly fit the opening.

## Inside Mount or Outside Mount

How you take your measurements will vary depending upon whether the Shoji fits within the window opening (inside mount or IM) overlaps the window opening (outside mount or OM) or is mounted to the ceiling (ceiling mount or CM)

## "Rounding" Your Measurements

Dimensions on the order form should be accurate to within 1/8". With outside mounts, round your measurements up or down to the nearest 1/8". With inside mounts, always round down to the nearest 1/8". Rounding up could result in Panel track hardware that is too wide to fit within the opening.

## Measuring for Inside Mounts

Measure the width inside the window opening at the top, middle, and bottom. Measure the height inside the opening at the left, right, and center. Order the narrowest width measurement and the shortest height measurement. Remember to round your measurements down to the nearest 1/8". Be sure the opening is deep enough for the number of tracks you are selecting.



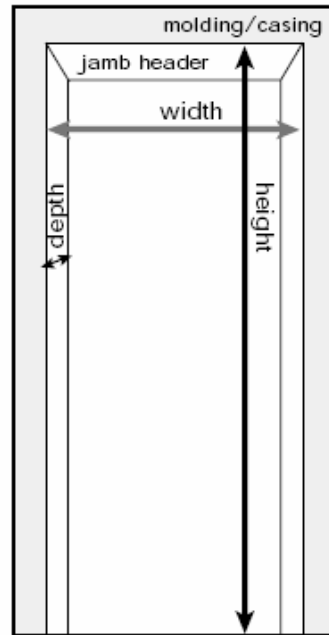
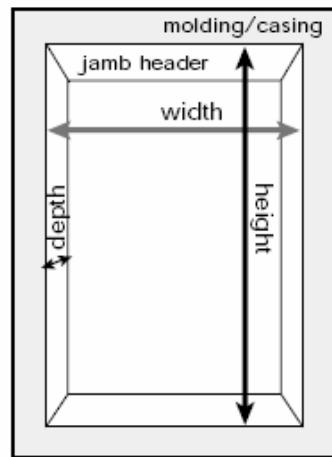
## Measuring for Outside Mounts

Measure the desired width and height. To minimize light leakage, it's recommended that the Shoji overlap the opening at least 2" on each side. When measuring the height, take into account the left, right, and center measurements.

## Measuring for ceiling Mounts

Measure the desired width and height. To minimize light leakage, it's recommended that the Shoji overlap the opening at least 2" on each side. When measuring the height, take into account the left, right, and center measurements on floor to ceiling mounts take the smallest measurement.

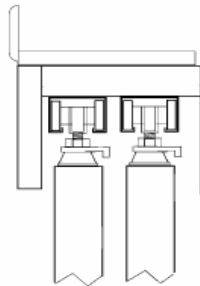
For Special shapes please take a template of you opening curves and add any straight



measurements.

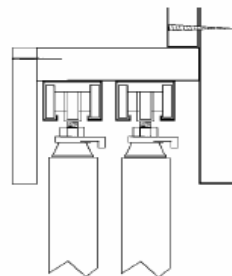
### INSIDE MOUNT

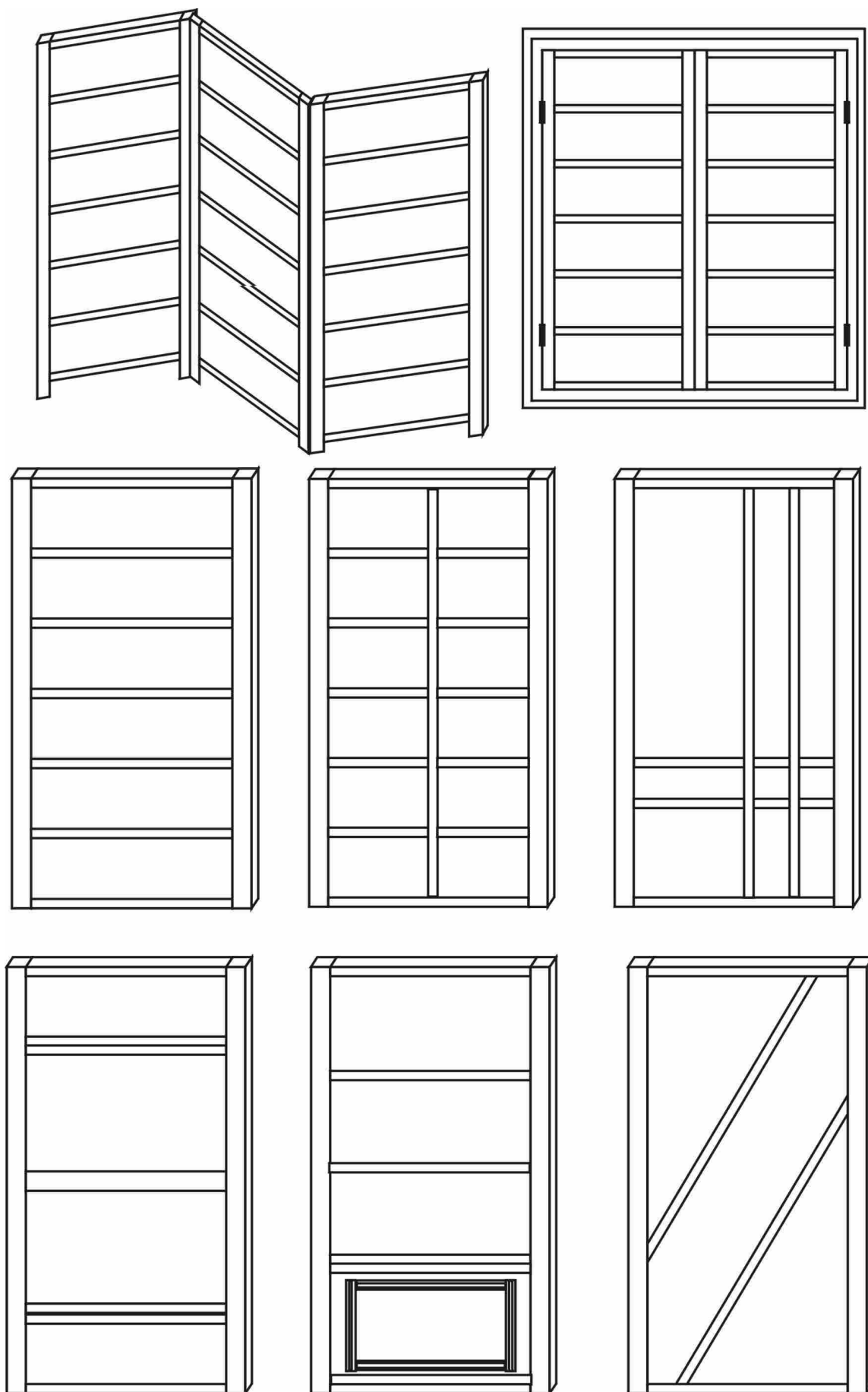
The shoji screens slide within the opening (jamb to jamb, wall to wall). Hardware is mounted to the top of the opening on either the header or ceiling.



### OUTSIDE MOUNT

The shoji screens slide outside and beyond the opening. Hardware is mounted over the opening on either the wall or ceiling.







# Shipping Policy

## Shipping Times

Most of our Shojis ship within 3 to 5 weeks after receipt of a complete order with credit card approval. On rare occasions, there may be manufacturing delays out of our control. In these cases, we will notify you of the delay and the estimated shipping date of your order. Unless there is a delay or need for more information from you, orders will be in production the following business day.

## Worldwide shipping

We ship to anywhere in the world. Shipping and handling charges for these shipments will apply on an individual order basis. If there are other charges (such as duty, brokerage, or taxes) that apply when goods are shipped to your country, the payment of these charges will be your responsibility. Please email our customer service department at [customerservice@mastercraftshutters.com](mailto:customerservice@mastercraftshutters.com) to obtain a shipping quote.

## Damage During Shipping

Your shojis are insured through the manufacturer while being shipped. It is your responsibility when signing for receipt of the Shoji, to thoroughly check the condition of the cartons. If you notice any damage to the boxes, indicate this on the courier's waybill. We would suggest that you sign your name and write "Damaged cartons" beside it. We ask that you notify us within 72 hours from the time you receive the damaged blinds and supply us with a copy of the waybill to process the claim with the courier. We will coordinate the repair or replacement of the damaged products. Please contact our customer service department at [customerservice@mastercraftshutters.com](mailto:customerservice@mastercraftshutters.com) or by phone at 1-800-608-8837 if you have any questions about this process.

## Return Policy

When you order custom Shojis from Mastercraft Shutters, each Shoji is individually manufactured for each opening using your measurements and options. For this reason, we can only accept returns on orders that are incorrectly filled by the manufacturer or that are defective. If there is a defective product the manufacturer will repair or replace the product at no charge.